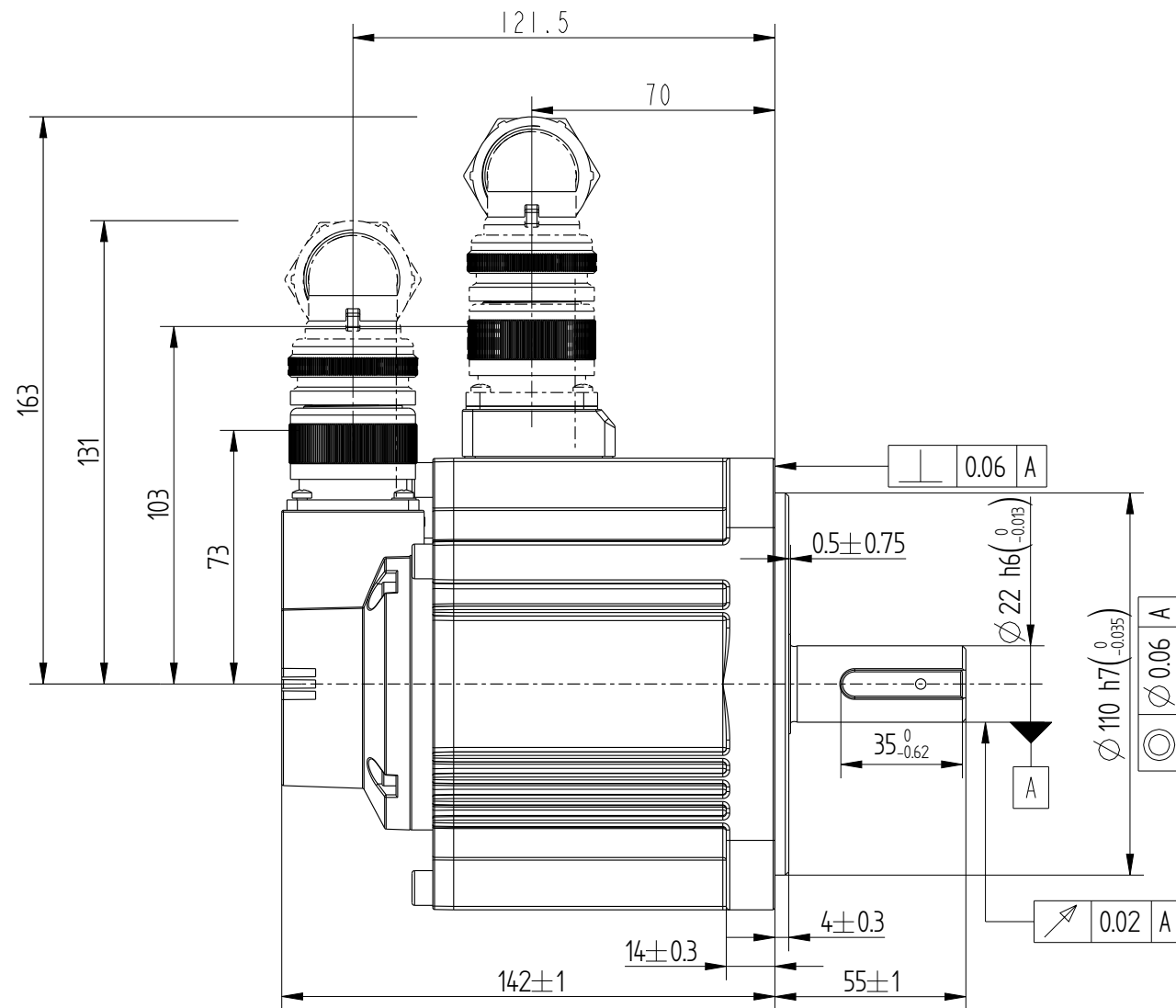
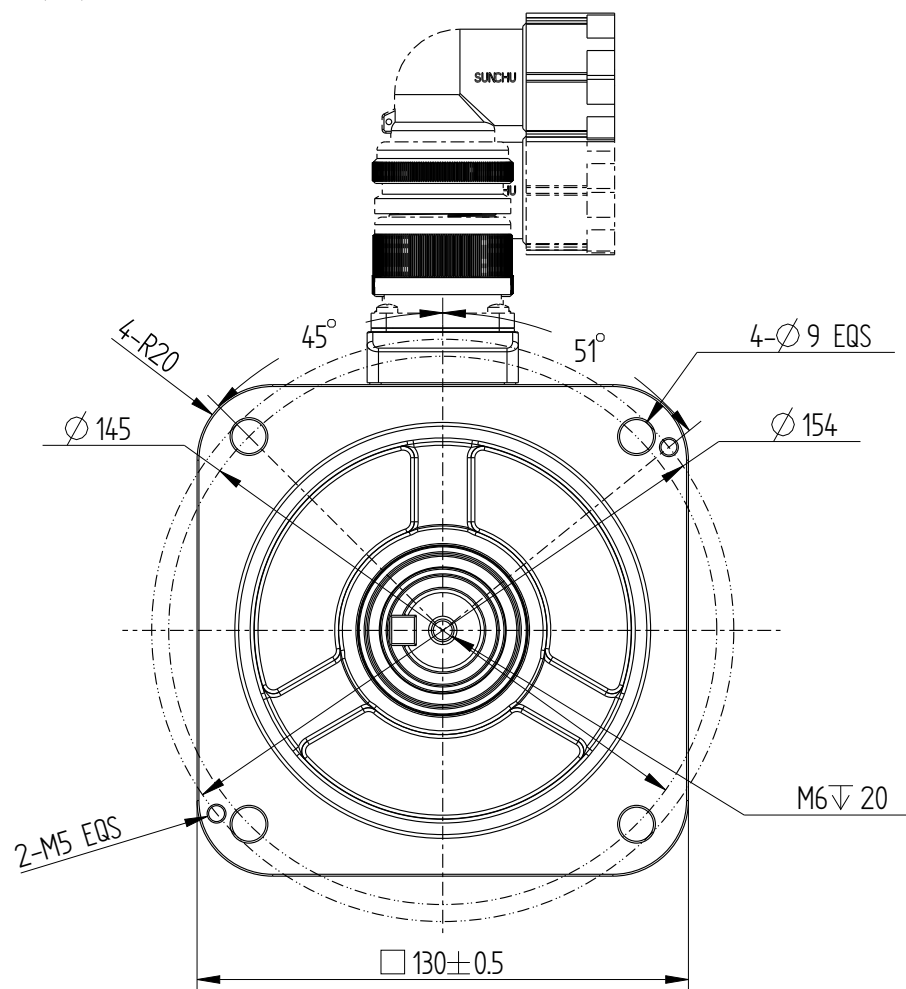
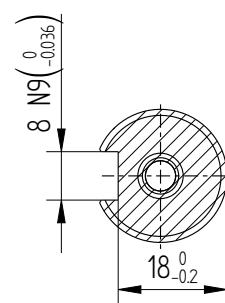
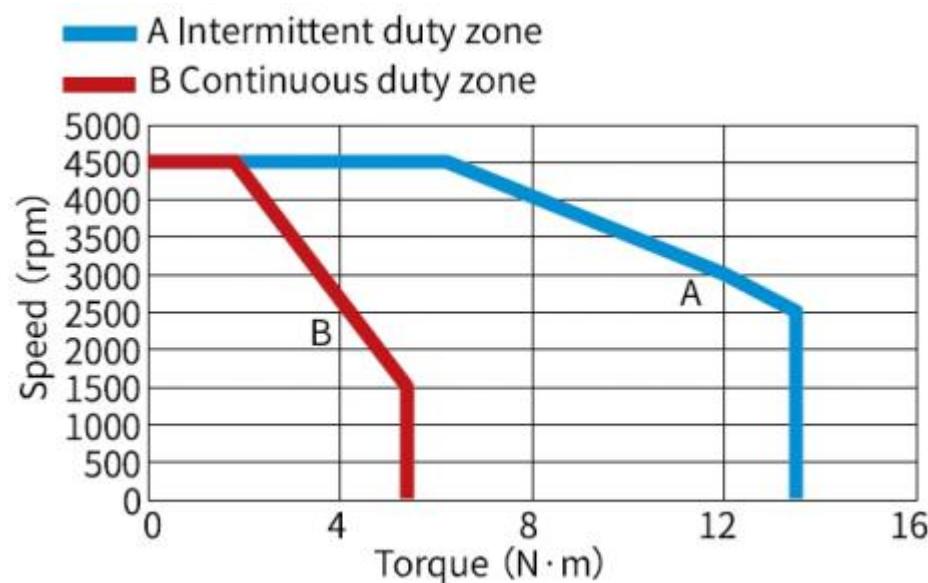


Amendment	Description

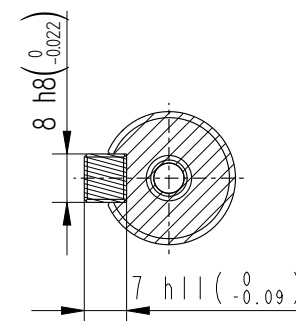
Unit: Millimeter (mm)



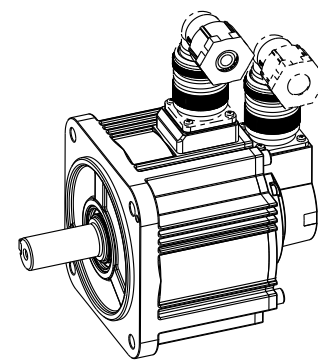
Basic function patmeters	
Rated power kW	0.85
Rated voltage V	380
Rated current A	3.5
Pea current at rated speed A	8.5
Rated torque Nm	5.39
Peak torque at rated speed Nm	13.5
Rated speed rpm	1500
Max speed rpm	4500
Rotor inertia kg·cm ²	13.56±10%
Encoder resolution	23bit
Insulation class	F(155)
Protection level	IP67
Static torque of brake Nm	\
Brake power supply V	\
Brake backlash°	\
Duty cycle	S1
Radial load N	≤686
Axial load N	≤196

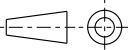


Dimension of shaft end



Dimension of shaft end with key



				Motor Outline Drawing			01117996-WX	
B02	Replace	/	/	/			<div>Mark</div> <div> INOVANCE</div>	
Version	Change method	Changed by	Date					
Design	/							
Check	/							
Craft	/							
Verify	/			Weight	Scale	Version	Page 1 of 1	
stangardization	/			5.8kg	12	B02	Model	MS1H3-85B15□-A331R-INT
Approve	/							